

# Session 1 Panel A

9:00-10:30AM

WITTENBERG ENGLISH SENIOR SYMPOSIUM 2017  
APRIL 21ST, 2017 • HOLLENBECK HALL



## Queering Gender, Challenging Norms

HOLLENBECK 124

**MADELYN DEVORE**

Creatures Of Fantasy, Ceasing to Be Human:  
Cisnormativity in Vidal's Works

**PAM DESELEM**

"Nearer My God to Thee": Cross Dressing and Feminist  
Theology in Louise Erdrich's *The Last Report on the  
Miracles at Little No Horse*

**MALLORY POWELL**

The Mutual Gaze: Power Swaps, Gender Roles, and The  
Gazes in Charlotte Brontë's *Jane Eyre*

FACULTY PANEL:

Rick Incorvati (Chair) • Lori Askeland • Kate Polak

Session 1  
Panel B  
9:00-10:30AM



WITTENBERG ENGLISH SENIOR SYMPOSIUM 2017  
APRIL 21ST, 2017 • HOLLENBECK HALL

Heroism, Love,  
Early Modern Culture

HOLLENBECK 215

LUKE BOWLING

Love's Fate in *Romeo and Juliet*: Death's Rebirth for "two star-crossed lovers"

ELIZABETH LADWIG

Questioning Present Ideals: Chivalry and Mortality in *Sir Gawain and the Green Knight*

CLAY ROBBINS

Sufficient To Have Stood, Though Free To Fall: Obedience vs. Reason in *Paradise Lost*

FACULTY PANEL:

Ty Buckman (Chair) • Cynthia Richards • D'Arcy Fallon

Session 1  
Panel C  
9:00-10:30AM



WITTENBERG ENGLISH SENIOR SYMPOSIUM 2017  
APRIL 21ST, 2017 • HOLLENBECK HALL

The Art of  
Adaptation, Film

HOLLENBECK 129

LAUREN HICKEY

*Painting a Story: Adapting Jane Eyre and Pride and Prejudice for a Modern Audience*

AMANDA ROGUS

*Freedom To Venture: Shakespeare's Green World and the Representation of Possibility in A Midsummer Night's Dream*

CAMILA QUIÑONES

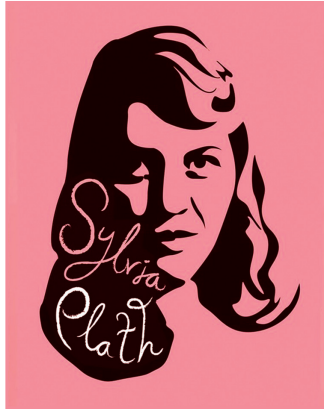
*"Inspired by True Events": A Look at the Biopic Genre and the Necessary Decisions a Writer Makes in Retelling a True Story for Film*

FACULTY PANEL:

Ian MacDonald (Chair) • Scot Hinson • Mac McClelland

# Session 2 Panel D

10:45AM - 12:30PM



WITTENBERG ENGLISH SENIOR SYMPOSIUM 2017  
APRIL 21ST, 2017 • HOLLENBECK HALL

## Gender Politics and The Beats

HOLLENBECK 334

MICHAELA FREEMAN

Who Remembers Victoria Lucas?: The Problem with  
Suicide, Glorification, and the Cult of Plath

DESTINY SMITH

A Stay in The Amazon: The Silencing of Women and  
Social Impact of Sylvia Plath's *The Bell Jar*

ZAKIYAH THOMAS

"You Do Not Do, You Do Not Do:" Ginsberg and Plath  
Kill the Father to Find a Sense of Self

AMANDA WAMPLER

A Strange Language of Sympathy: Ideologies of Food and  
Hunger in Plath and Kerouac

FACULTY PANEL:

Bob Davis (Chair) • Scot Hinson • Mac McClelland

# Session 2 Panel E 10:45AM - 12:30PM



WITTENBERG ENGLISH SENIOR SYMPOSIUM 2017  
APRIL 21ST, 2017 • HOLLENBECK HALL

## Women and Romance in the 19th Century

HOLLENBECK 215

KATE GUSTAFSON

Maggie Tulliver as the Ultimate Female Apologist:  
Reading *The Mill on the Floss* through a Feminist Disability  
Studies Lens

JILLIAN EDWARDS

Learning to Fall: Rape and Its Ambiguity in Hardy's *Tess of  
the D'Urbervilles*

TANNER JOBES

Ghosts on the Moors: Traumatic Narratives in *Wuthering  
Heights*

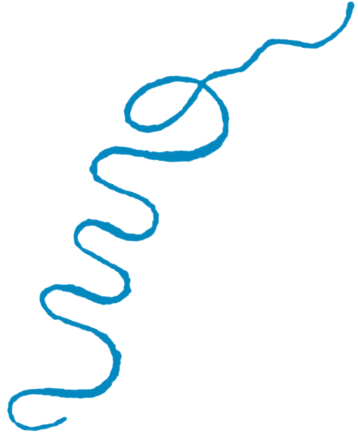
DYLAN OLIVER

Fictitious Dreams and Idealization: The Female Archetypes  
of Edgar Poe

FACULTY PANEL:

Lori Askeland (Chair) • Rick Incorvati • Mike Mattison

Session 3  
Panel F  
1:00-2:30PM



WITTENBERG ENGLISH SENIOR SYMPOSIUM 2017  
APRIL 21ST, 2017 • HOLLENBECK HALL

Representing Trauma  
in the Enlightenment

HOLLENBECK 124

EMMA ARACE

Looking at and Looking Away: The Possibilities and Limits of Language and the Body in *Tristram Shandy*

KALIE MCDORMAN

When *Death Knocks*: Understanding the Trauma Narrative in Laurence Sterne's *The Life and Opinions of Tristram Shandy, Gentleman*

SARAH BROWNELL

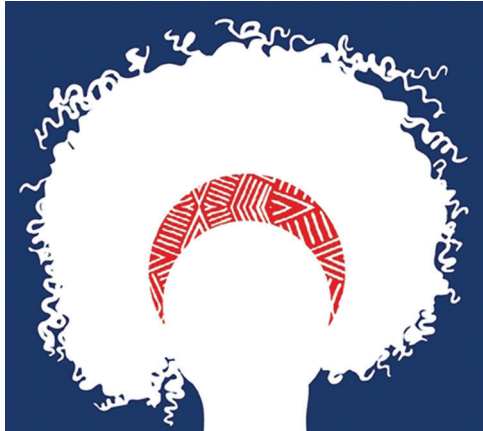
Dire Offense or Trivial Things: The Disabling of Belinda in "The Rape of the Lock"

FACULTY PANEL:

Cynthia Richards (Chair) • Ty Buckman • Bob Davis

# Session 3 Panel G 1:00-2:30PM

WITTENBERG ENGLISH SENIOR SYMPOSIUM 2017  
APRIL 21ST, 2017 • HOLLENBECK HALL



## Post-Colonial Women

HOLLENBECK 316

AUTUMN BALDWIN

"Women Who Both Cook and Write": Women as More than "Type" in Edwidge Danticat's *Krik? Krak!*

FRANCESCA JANES

An Immigrant's Definition of Home: Representation of Homeland in Chimimanda Ngozi Adichie's *Americanah*

KORIE SHARRAR

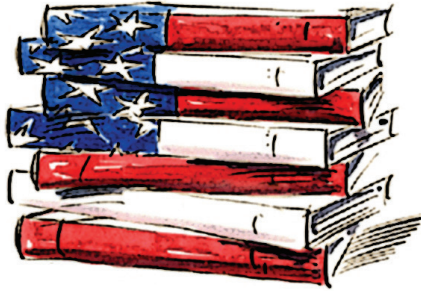
An Immigrant Sense of Belonging: *Americanah* as a Critique of Trump's America

FACULTY PANEL:

Kate Polak (Chair) • Sha'Dawn Battle • Ian MacDonald

# Session 3 Panel H 1:00-2:30PM

WITTENBERG ENGLISH SENIOR SYMPOSIUM 2017  
APRIL 21ST, 2017 • HOLLENBECK HALL



## War and Trauma in Contemporary American Lit

**HOLLENBECK 318**

**REID DONATO**

Foreign Bodies: Social Darwinism and the Specter of the Progressive Era in Don DeLillo's *White Noise* and *Zero K*

**JESSICA HAMM**

Preeminence and the Powerless: Plot and Trauma in *The Plot against America*

**STEPHEN CURRY**

The Traumatic Realities of William Burroughs: *Naked Lunch* Analysis

FACULTY PANEL:

Scot Hinson (Chair) • Lori Askeland • D'Arcy Fallon



# Session 4 Panel I

2:45 - 4:15PM

WITTENBERG ENGLISH SENIOR SYMPOSIUM 2017  
APRIL 21ST, 2017 • HOLLENBECK HALL



## Writing (Dis)Ability

HOLLENBECK 124

MARIA SYMONS

The Color of the Sand: Confronting Truth, Memory, and Change in Nonfiction Writing

MEAGHAN SUMMERS

The Invisible Discourse: A Poetic Disability

SOPHIE HULEN

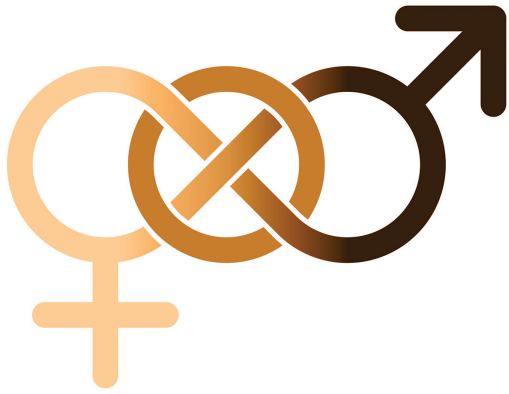
Break Outs and Breakthroughs: Institutional Deviations from the Writing Center Grand Narrative

FACULTY PANEL:

Mike Mattison (Chair) • Bob Davis • Mac McClelland

Session 4  
Panel J  
2:45 - 4:15PM

WITTENBERG ENGLISH SENIOR SYMPOSIUM 2017  
APRIL 21ST, 2017 • HOLLENBECK HALL



Race, Gender, Monsters,  
and the Empathy Gap

HOLLENBECK 316

CELINA THOMPSON

William Faulkner through the Eyes of Black Lives Matter

JAYDE GLASER

Collapsing Caves: Toni Morrison's Destruction and Rebuilding of Stereotypical Female Gender Roles in *Sula*

DOUG ROBBINS

Themes of Humanity and Science in Mary Shelley's *Frankenstein*

FACULTY PANEL:

Sha'Dawn Battle (Chair) • Scot Hinson • Rick Incorvati