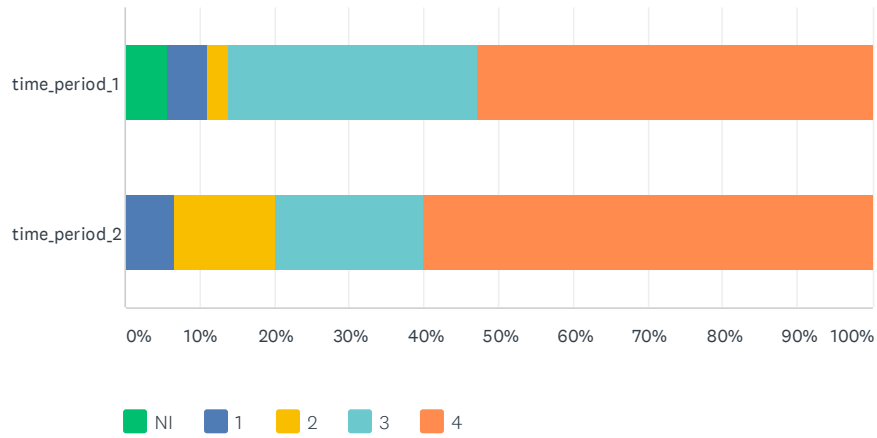


### Q18 Provided an adequate orientation on their role as a supervisor.

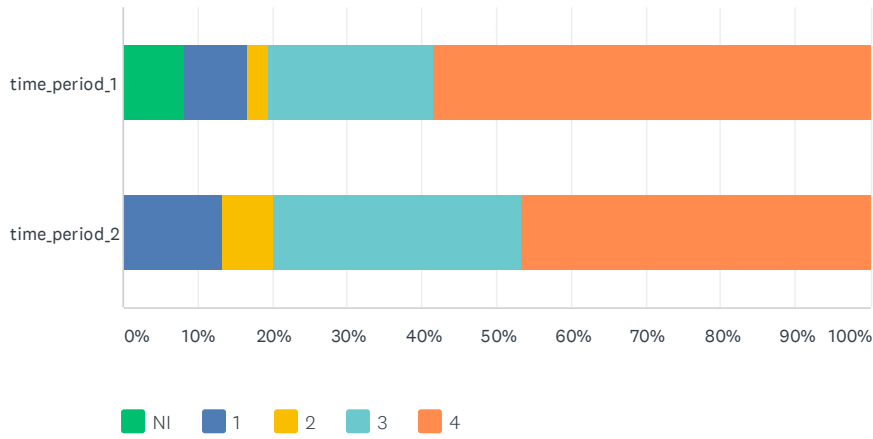
Answered: 51 Skipped: 11



	NI	1	2	3	4	TOTAL
time_period_1	5.56% 2	5.56% 2	2.78% 1	33.33% 12	52.78% 19	70.59% 36
time_period_2	0.00% 0	6.67% 1	13.33% 2	20.00% 3	60.00% 9	29.41% 15
Total Respondents	2	3	3	15	28	51

### Q19 Developed a team approach by communicating frequently with the cooperating teacher and student teacher.

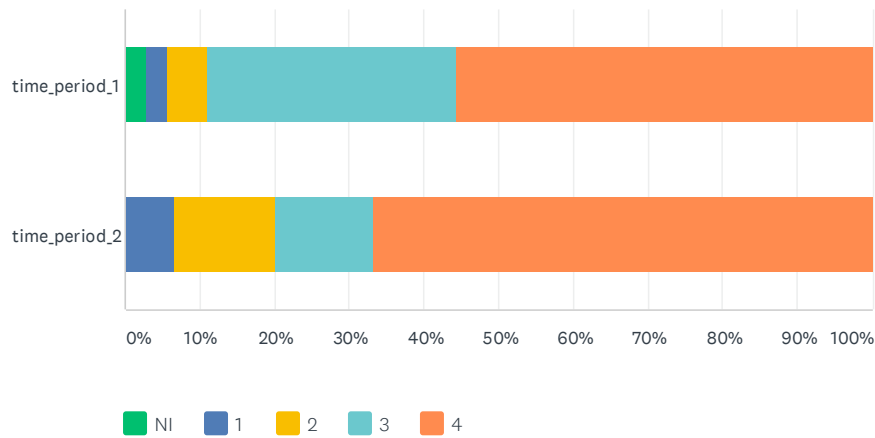
Answered: 51 Skipped: 11



	NI	1	2	3	4	TOTAL
time_period_1	8.33% 3	8.33% 3	2.78% 1	22.22% 8	58.33% 21	70.59% 36
time_period_2	0.00% 0	13.33% 2	6.67% 1	33.33% 5	46.67% 7	29.41% 15
Total Respondents	3	5	2	13	28	51

### Q20 Demonstrated a sincere interest in the development of the student teacher.

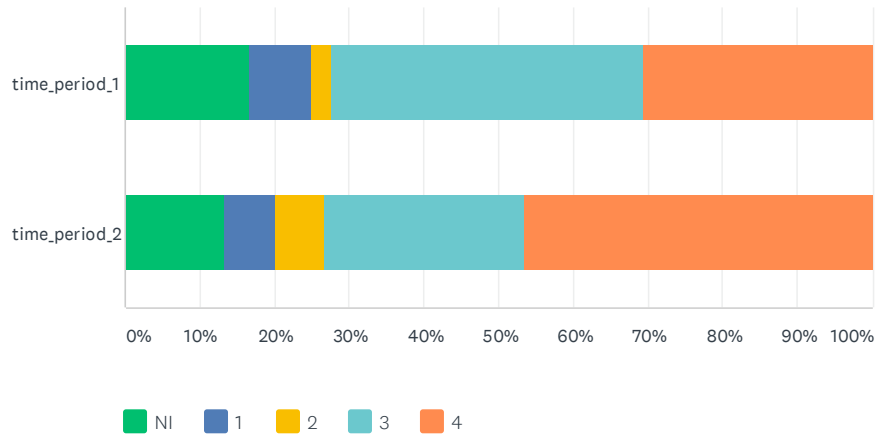
Answered: 51 Skipped: 11



	NI	1	2	3	4	TOTAL
time_period_1	2.78%	2.78%	5.56%	33.33%	55.56%	70.59%
	1	1	2	12	20	36
time_period_2	0.00%	6.67%	13.33%	13.33%	66.67%	29.41%
	0	1	2	2	10	15
Total Respondents	1	2	4	14	30	51

### Q21 Provided useful suggestions, materials, about teaching content.

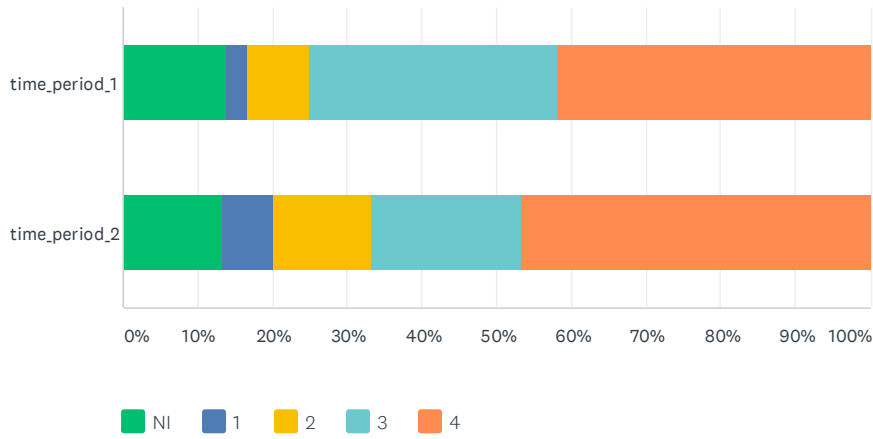
Answered: 51 Skipped: 11



	NI	1	2	3	4	TOTAL
time_period_1	16.67% 6	8.33% 3	2.78% 1	41.67% 15	30.56% 11	70.59% 36
time_period_2	13.33% 2	6.67% 1	6.67% 1	26.67% 4	46.67% 7	29.41% 15
Total Respondents	8	4	2	19	18	51

### Q22 Provided ideas and strategies to help improve instruction and make it more meaningful for students.

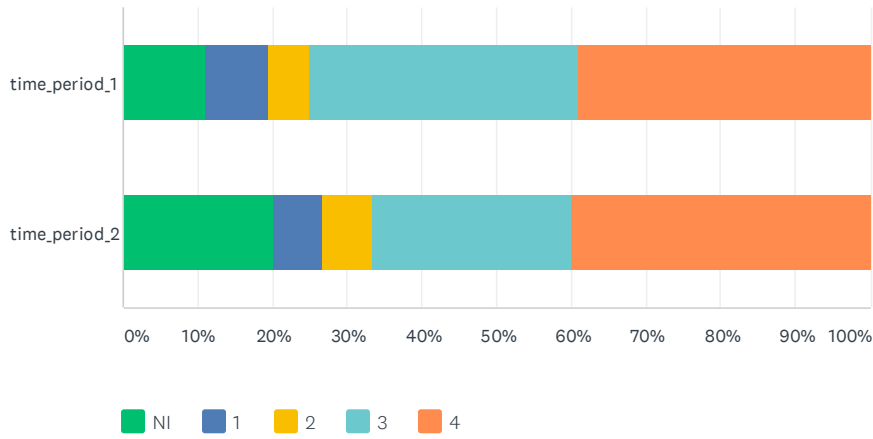
Answered: 51 Skipped: 11



	NI	1	2	3	4	TOTAL
time_period_1	13.89% 5	2.78% 1	8.33% 3	33.33% 12	41.67% 15	70.59% 36
time_period_2	13.33% 2	6.67% 1	13.33% 2	20.00% 3	46.67% 7	29.41% 15
Total Respondents	7	2	5	15	22	51

Q23 Helped the student teacher improve the classroom management abilities: organization, communication, climate setting, discussion, guidance, etc.

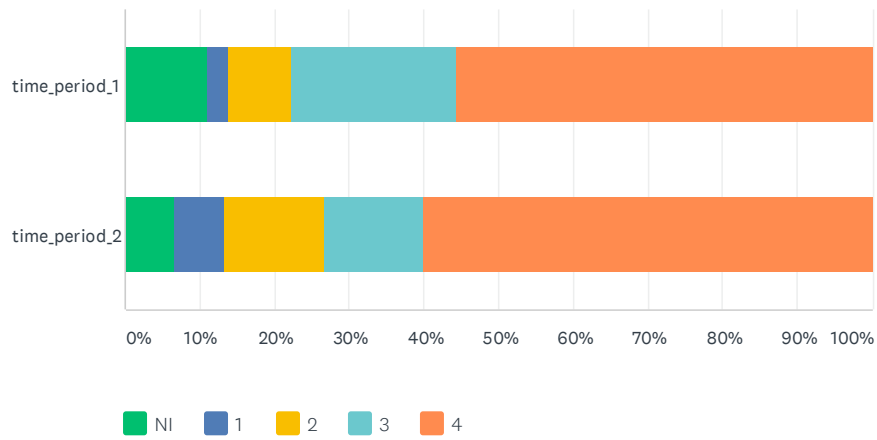
Answered: 51 Skipped: 11



	NI	1	2	3	4	TOTAL
time_period_1	11.11% 4	8.33% 3	5.56% 2	36.11% 13	38.89% 14	70.59% 36
time_period_2	20.00% 3	6.67% 1	6.67% 1	26.67% 4	40.00% 6	29.41% 15
Total Respondents	7	4	3	17	20	51

### Q24 Provided timely and helpful feedback to the student teacher.

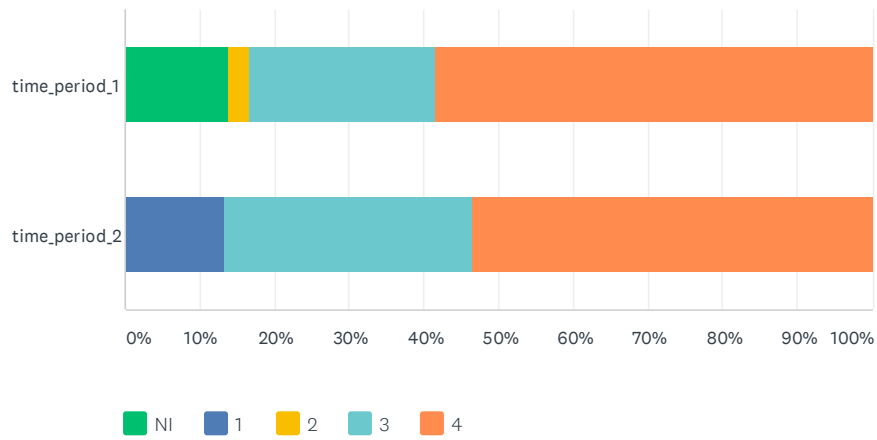
Answered: 51 Skipped: 11



	NI	1	2	3	4	TOTAL
time_period_1	11.11% 4	2.78% 1	8.33% 3	22.22% 8	55.56% 20	70.59% 36
time_period_2	6.67% 1	6.67% 1	13.33% 2	13.33% 2	60.00% 9	29.41% 15
Total Respondents	5	2	5	10	29	51

### Q25 Was flexible in scheduling observations and follow-up conferences.

Answered: 51 Skipped: 11

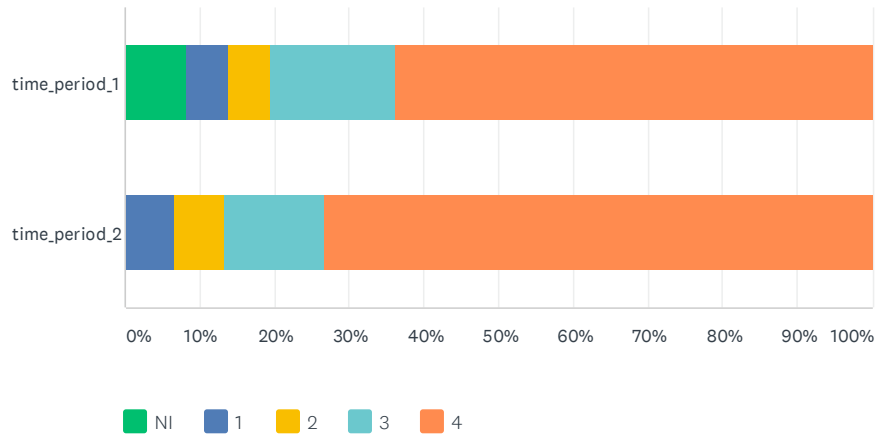


	NI	1	2	3	4	TOTAL
time_period_1	13.89% 5	0.00% 0	2.78% 1	25.00% 9	58.33% 21	70.59% 36
time_period_2	0.00% 0	13.33% 2	0.00% 0	33.33% 5	53.33% 8	29.41% 15
Total Respondents	5	2	1	14	29	51



### Q26 Was an effective model and professional.

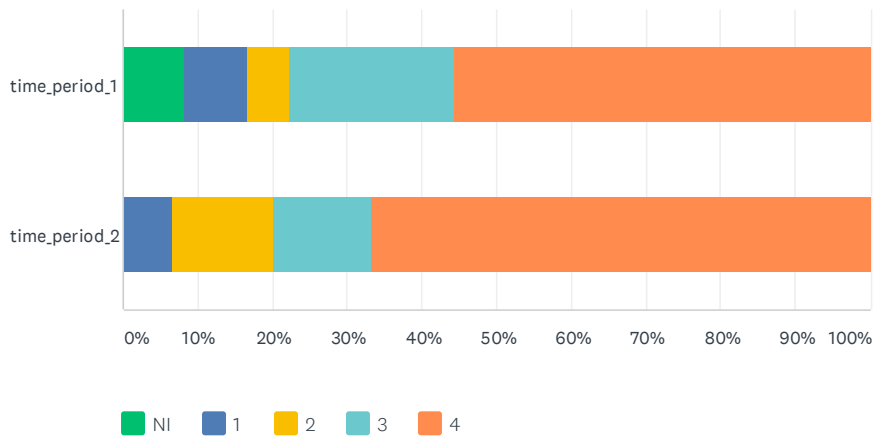
Answered: 51 Skipped: 11



	NI	1	2	3	4	TOTAL	
time_period_1	8.33% 3	8.33% 3	5.56% 2	5.56% 2	16.67% 6	63.89% 23	70.59% 36
time_period_2	0.00% 0	6.67% 1	6.67% 1	13.33% 2	73.33% 11	29.41% 15	
Total Respondents	3	3	3	8	34	51	

Q27 The overall quality of the support provided during the student teaching experience:

Answered: 51 Skipped: 11



	NI	1	2	3	4	TOTAL
time_period_1	8.33% 3	8.33% 3	5.56% 2	22.22% 8	55.56% 20	70.59% 36
time_period_2	0.00% 0	6.67% 1	13.33% 2	13.33% 2	66.67% 10	29.41% 15
Total Respondents	3	4	4	10	30	51

### Q28 Additional Comments (optional):

Answered: 12 Skipped: 50

	ADDITIONAL COMMENTS (OPTIONAL):		TOTAL
time_period_1		100.00% 11	91.67% 11
time_period_2		100.00% 1	8.33% 1
Total Respondents	12		12