

# **Health, Wellness & Athletics**

## **Restoration and Expansion Initiative**

**wittenberg**  
UNIVERSITY





# A Message From the University

- **170 year history** of changing lives
- Nationally recognized liberal arts institution known for its tradition of excellence in **academics** and **athletics**
- The **restoration** and **renovation** of the 1929 Fieldhouse and 1982 Health, Physical Education and Recreation (HPER) Center, as well as the **construction** of the new multi-purpose indoor athletic facility
- Project will improve **recruitment/retention** of students, and provide space for **additional events**, increasing the number of **overnight visits** in the community
- This initiative provides positive short- and long-term **economic impact** in the community





# Institutional Strategy



- Identify Areas of Competitive Advantage (targeted academic areas and athletics)
- Invest in Targeted Facilities to Increase Recruitment of Students
- Enhance Student Success & Retention (central gathering place, health & wellness, scholar-athletes)
- Support New Academic Programs, 24 Intercollegiate Athletics Teams, 14 Club Teams/Intramurals & Recreation Opportunities for Entire Community





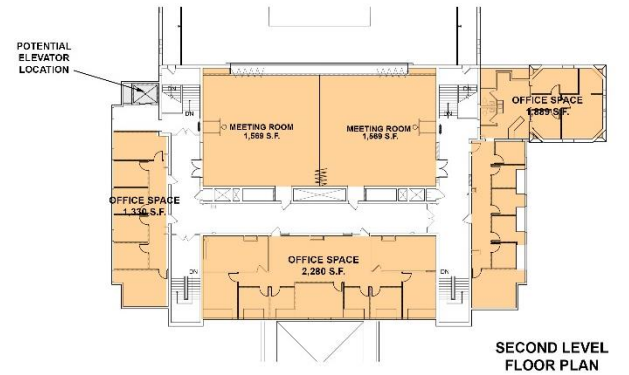
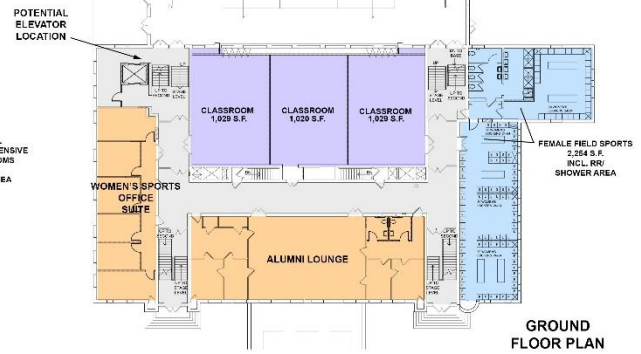
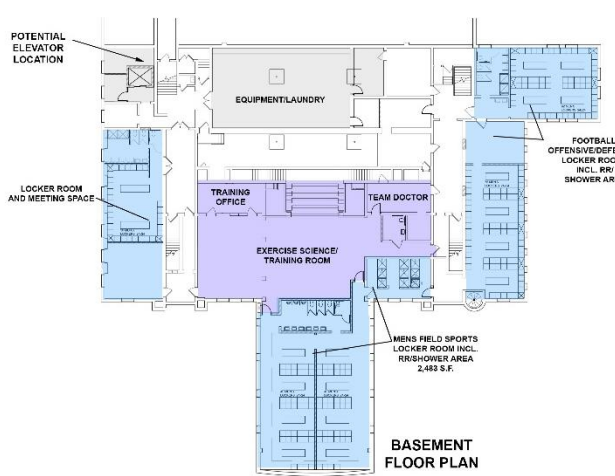
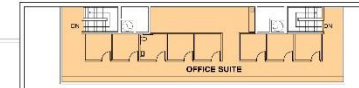
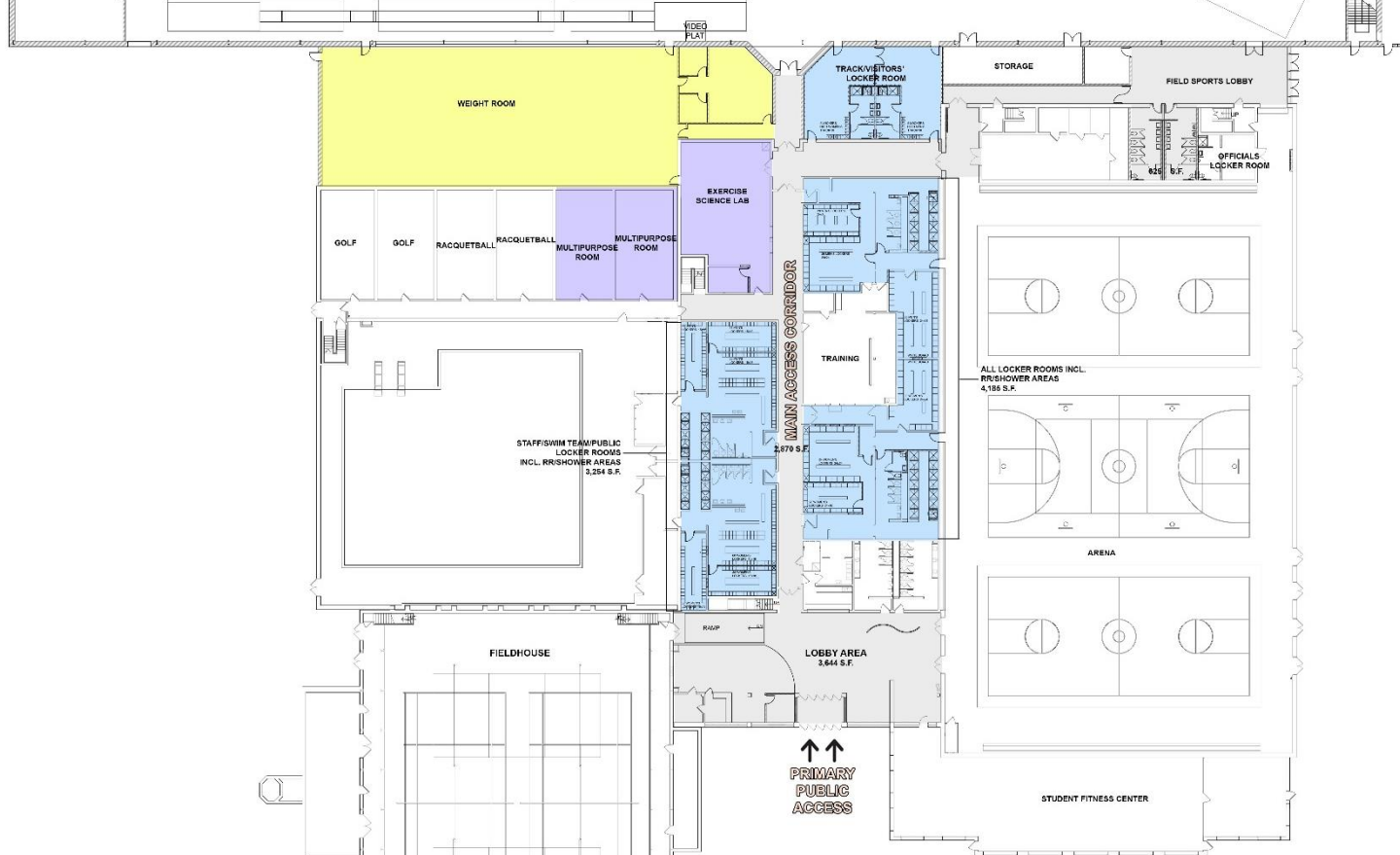
# Aerial View





# Interior of New Multi-Purpose Facility





# Proposed Restoration & Renovation Plans





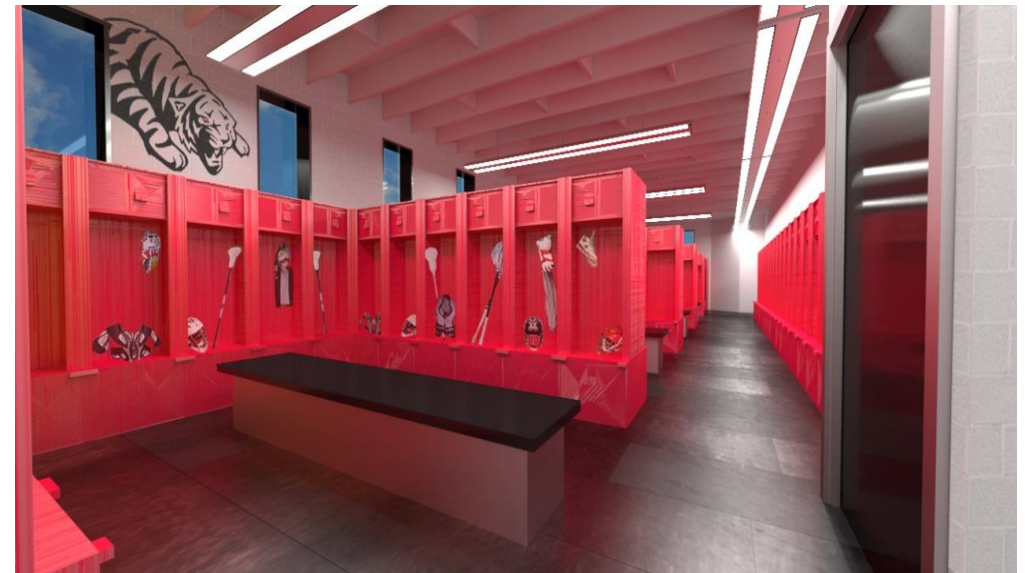
# The HW&A Initiative

Restoration, Renovation & Expansion Project includes:

- Indoor 100-yard Artificial Turf Surface
- 300-meter Indoor Track
- New Weight Room
- Strength Training & Wellness Center
- Technology-Enabled Classroom Spaces
- Updated Locker Rooms & Alumni/Recruiting Lounge
- Multi-Purpose, Special Event Spaces
- New Court Surfaces (Tennis, Volleyball & Basketball)



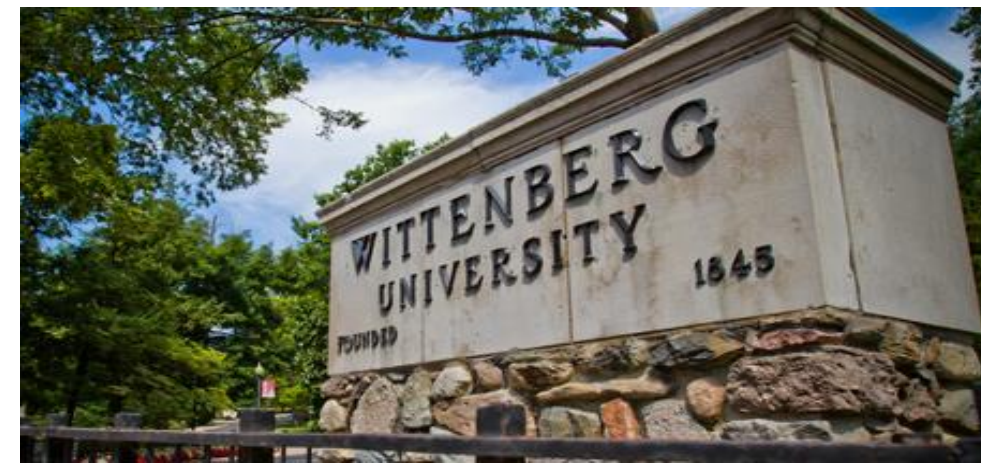
Renovated Lobby in HPER Center



Renovated Locker Rooms



# Growing Community Connections & Economic Impact



## Where We Are

Community  
Service/Leadership

Leadership Roles

Philanthropic  
Partnerships

Special Events and  
Programs

## Where We Are Going

AAU/Club Regional &  
National Tournaments

NCAC & NCAA  
Championships

Strategic Community  
Partnerships

Near-term Job Growth





# Investment Opportunity

- Total projected costs: \$40.55M
  - Includes \$2M Maintenance & Operations fund
- Pledged to date: \$18.2M
- Tax credit eligibility: \$7.05M
- Additional contributions required: \$15.3M



Proposed View from Bill Edwards Drive

We ask for **your support** to move Wittenberg closer to breaking ground on this exciting project that will clearly benefit the University and our students.

